



InterWord

... integrates the daily Workflow on PC and AS/400

A campaign is created within minutes – With the flexible layout of a PC-document and large amount of data from the AS/400-system

InterWord gives access to advanced text processing directly on the AS/400...

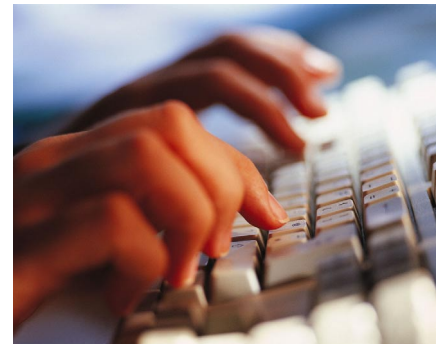
To merge data from the AS/400 system with a document created in a PC word-processing program like Word, WordPro or WordPerfect is a daily challenge for many users.

InterWord makes the integration between document templates created on the PC and data from the AS/400-system.

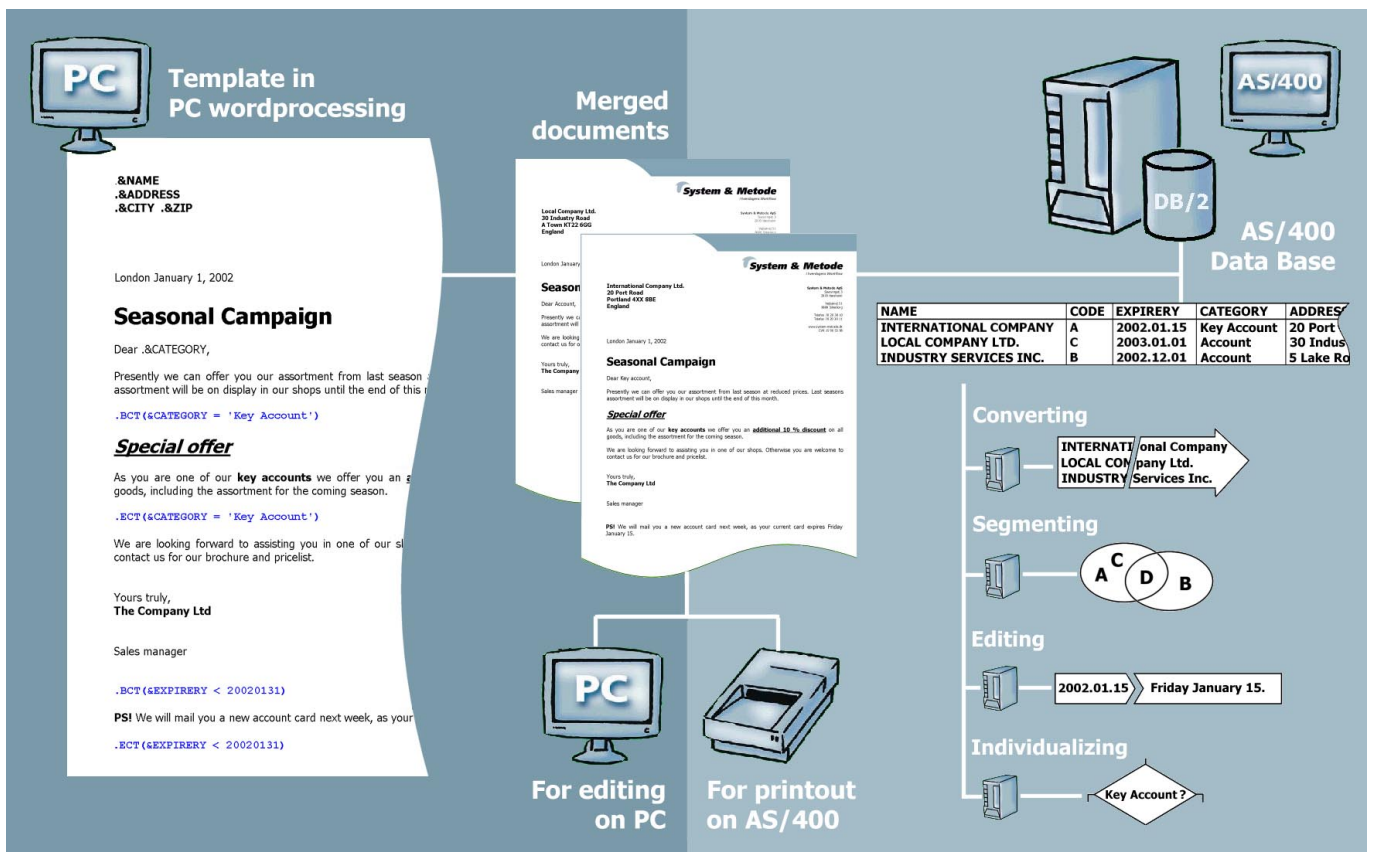
Document template

The template can be created in any PC word-processing program, which supports the general RTF-format - Rich Text Format.

All basic functions such as font-type, bold, left-/right alignment and similar can be used when creating the template.



The data-fields from the AS/400-system and system values like date and page number can be inserted as needed. Paragraphs and text can be conditioned by the contents of the data-fields, which enables customization of the documents to fit the individual receiver. The template is stored centrally on the AS/400.





... advanced text processing with AS/400 database files

Printing merged documents

InterWord merges data and template centrally on the AS/400. This gives stability and makes investments in extra print servers unnecessary. The result is a "normal" print from the AS/400, which can be printed directly on the laser printer or added additional graphics like logo and sender information as determined by InterForm.

Editing a merged document

A merged document can be opened in the word-processing program on the PC for an individual editing and customization after which it can be saved centrally on the AS/400 or printed on a printer.

In this process the document can be added more advanced functions and converted to the preferred text-processing format.

Segmenting

Templates can be connected to one or more database-files on the AS/400 either directly or via Query. This opens a possibility for a very advanced segmenting with control checks and collection of data from other files.

Conversion

The individual data-fields can be added user defined conversion functions, which makes it possible to have a better integration of the data-fields in the text.

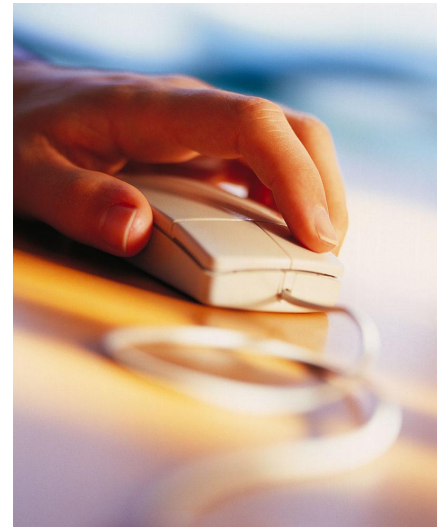
As an example old customer records where name and address have been registered with capitals can be converted to a more convenient format by using the function "Upper-case to Lower-case".

Editing

A very advanced function for editing a date field makes it possible to e.g. change a numerical date to a text field where the name of the weekday and the month is included. Other numerical data-fields can be edited as required with thousand separator and a flexible number of decimals after the comma.

Individualizing

The template can include conditioned paragraphs or text, controlled by the data-fields. By using this function it is possible to individualize the document to a single recipient. Conditioned paragraphs can dynamically pull more templates into the current document.



Advanced document merge

It is possible to have a command file, where data is registered with fieldname and with reference to several conditioned templates, control the merge process – this means that one recipient can get several documents. The command file can also be build from an external data source and work as a temporary database.

Prototyping with graphical viewing

When creating a template a command file can contain examples of data and work as a prototype. The result can be viewed instantly in the graphical viewer, which is included in the product.

OfficeVision

InterWord is a fully qualified replacement for IBM OfficeVision – especially since IBM no longer support or develop on OfficeVision.

Existing documents, created in OfficeVision can be converted in one process to the RTF-format, and then read and edited by most word-processing systems.

Advanced OfficeVision functions, such as insertion of part-documents, conditioned elements etc. is of-course supported by InterWord.

Module under InterForm

InterWord is developed as an additional module under InterForm, which means that forms from InterForm can be added to a merged document and be part of a fully automatic document distribution.

In Denmark InterForm is the most used forms solution in connection with laser printers and e-forms (PDF) on the AS/400.

